

# STORMWATER MANAGEMENT PROGRAM

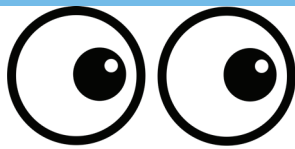
# CHECK IT OUT!



The Borough televising truck continues to be used to find out the condition of the piping system. This will provide a great tool for the Stormwater Authority to continue to create a robust improvement plan.

From May 2019 to November 2019, approximately **15%** (253 pipe segments) of the Borough stormwater system had been televised.

**Today it is close to 20%!**



*Some of our findings along the way*

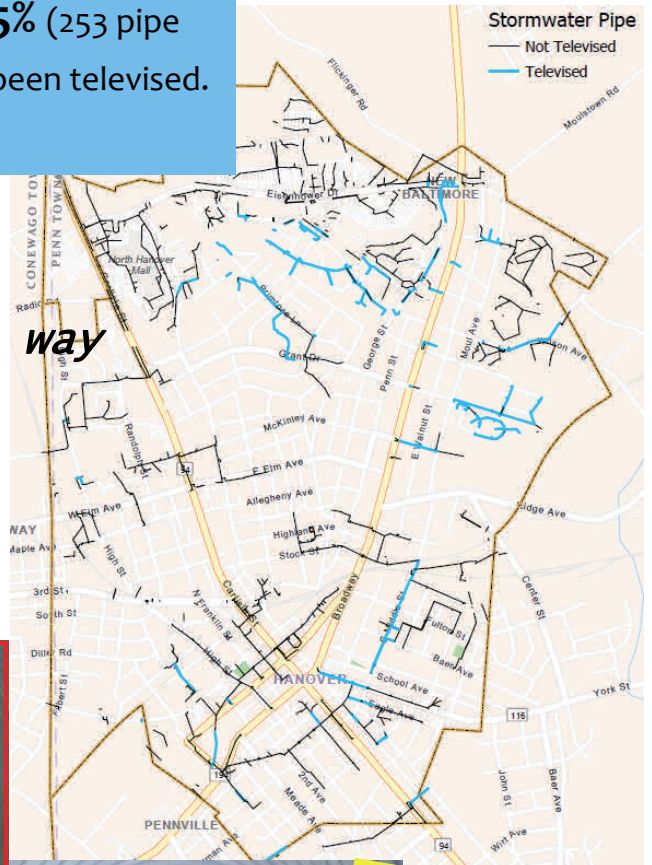


**SHARP BENDS**

**We will continue to address:**



**COLLAPSES**



**HOLES**

**SEDIMENT**

**CRACKS**

**ILLICIT CONNECTIONS**

